

Doncaster Dr between Banff PI and Golden PI

November 22, 2020 To November 27, 2020



The data presented here is for information purposes only and should not be considered authoritative for construction, geotechnical, engineering, navigational, legal, or other site-specific uses. The information shared is owned by the Transportation Division of the Engineering Department at the District of Saanich. Accuracy is not guaranteed.

Start Date: 23-Nov-20
 Start Time: 17:00
 Station ID: R0313-03

Location 1: Doncaster Dr between Banff PI and Golden PI

Note:

DATE:	November 23, 2020		November 24, 2020		November 25, 2020		November 26, 2020		November 27, 2020		WK AVG		WK AVG	HOURLY
	MON		TUE		WED		THURS		FRI		NB	SB	CH 1+2	%
Time:	NB	SB	NB	SB	NB	SB	NB	SB	NB	SB	NB	SB		
12-1 AM	0	0	1	3	1	1	2	1			1	1	2	0.4%
1-2 AM	0	0	0	2	1	2	0	0			0	1	1	0.2%
2-3 AM	0	0	2	0	0	1	0	0			1	0	1	0.1%
3-4 AM	1	1	0	0	0	0	0	0			0	0	1	0.1%
4-5 AM	1	0	2	0	1	0	2	0			2	0	2	0.3%
5-6 AM	4	1	4	2	2	1	2	1			3	1	4	0.7%
6-7 AM	5	4	6	10	7	3	2	3			5	5	10	1.7%
7-8 AM	16	11	11	13	14	10	20	16			15	13	28	4.7%
8-9 AM	30	29	29	26	23	29	36	41			30	31	61	10.3%
9-10 AM	10	34	16	23	17	24	18	23			15	26	41	7.0%
10-11 AM	21	23	22	22	24	20	15	28			21	23	44	7.4%
11-12 PM	14	25	22	13	18	26	24	22			20	22	41	6.9%
12-1 PM	16	23	17	15	18	32	19	22			18	23	41	6.8%
1-2 PM	25	25	21	16	20	20	23	22			22	21	43	7.3%
2-3 PM	28	32	21	32	24	30	38	32			28	32	59	10.0%
3-4 PM	19	26	15	20	25	39	27	30			22	29	50	8.5%
4-5 PM	18	30	19	30	16	20	15	33			17	28	45	7.6%
5-6 PM	17	24	19	26	21	25	14	23			18	25	42	7.1%
6-7 PM	12	10	12	14	16	10	13	20			13	14	27	4.5%
7-8 PM	5	11	8	8	9	10	13	7			9	9	18	3.0%
8-9 PM	8	8	5	6	7	13	4	6			6	8	14	2.4%
9-10 PM	4	8	4	3	3	2	3	5			4	5	8	1.4%
10-11 PM	0	3	3	1	5	3	4	3			3	3	6	0.9%
11-12 AM	2	1	2	3	2	3	2	1			2	2	4	0.7%
LANES	256	329	261	288	274	324	296	339			272	320	592	100.0%
TOTAL	585		549		598		635				600			
	MON		TUE		WED		THURS		FRI		WK AVG			

PEAK HOUR					TOTAL VEHICALS-PEAK PERIODS		2 HOUR PEAK INTERVALS					
MAX. 7 - 9 am PEAK HOUR	61	⇒	10.3%	between	8-9 AM	258	⇒	6 HR TOTAL	2 HR AM (7 - 9 AM)			
MAX. 7 - 11 am PEAK HOUR	61	⇒	10.3%	between	8-9 AM	176	⇒	4 HR TOTAL	VEH / HR	VEH / 2HR	2 HR %	
MAX. 11 am - 1 pm PEAK HOUR	41	⇒	6.9%	between	11-12 PM				7-8 AM	28	89	15.0%
MAX. 11 am - 3 pm PEAK HOUR	59	⇒	10.0%	between	2-3 PM				8-9 AM	61		
MAX. 4 - 6 pm PEAK HOUR	45	⇒	7.6%	between	4-5 PM				2 HR NOON (11 - 1 PM)			
MAX. 3 - 6 pm PEAK HOUR	50	⇒	8.5%	between	3-4 PM				VEH / HR	VEH / 2HR	2 HR %	
									11-12 PM	41	82	13.8%
									12-1 PM	41		
									2 HR PM (4 - 6 PM)			
									VEH / HR	VEH / 2HR	2 HR %	
									4-5 PM	45	88	14.8%
									5-6 PM	42		

Doncaster Dr between Banff PI and Golden PI

Northbound

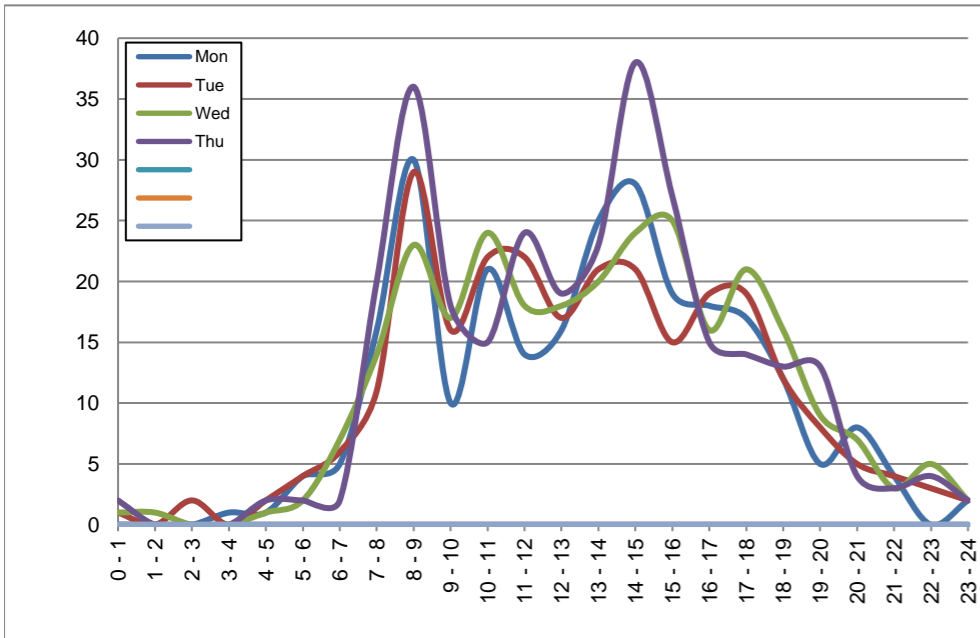
November 23, 2020 to November 26, 2020

Hourly Volumes

Time Period	Mon	Tue	Wed	Thu			
	Nov 23	Nov 24	Nov 25	Nov 26			
0 - 1	0	1	1	2			
1 - 2	0	0	1	0			
2 - 3	0	2	0	0			
3 - 4	1	0	0	0			
4 - 5	1	2	1	2			
5 - 6	4	4	2	2			
6 - 7	5	6	7	2			
7 - 8	16	11	14	20			
8 - 9	30	29	23	36			
9 - 10	10	16	17	18			
10 - 11	21	22	24	15			
11 - 12	14	22	18	24			
12 - 13	16	17	18	19			
13 - 14	25	21	20	23			
14 - 15	28	21	24	38			
15 - 16	19	15	25	27			
16 - 17	18	19	16	15			
17 - 18	17	19	21	14			
18 - 19	12	12	16	13			
19 - 20	5	8	9	13			
20 - 21	8	5	7	4			
21 - 22	4	4	3	3			
22 - 23	0	3	5	4			
23 - 24	2	2	2	2			
Day Total	256	261	274	296			

15-Minute Volumes

Time Start	Mon	Tue	Wed	Thu			
	Nov 23	Nov 24	Nov 25	Nov 26			
0:00	0	0	0	0			
0:15	0	0	0	1			
0:30	0	0	0	0			
0:45	0	1	1	1			
1:00	0	0	0	0			
1:15	0	0	0	0			
1:30	0	0	1	0			
1:45	0	0	0	0			
2:00	0	1	0	0			
2:15	0	0	0	0			
2:30	0	1	0	0			
2:45	0	0	0	0			
3:00	0	0	0	0			
3:15	0	0	0	0			
3:30	0	0	0	0			
3:45	1	0	0	0			
4:00	0	0	0	0			
4:15	0	1	1	0			
4:30	1	0	0	0			
4:45	0	1	0	2			
5:00	1	0	0	1			
5:15	1	1	0	0			
5:30	1	3	1	1			
5:45	1	0	1	0			
6:00	0	0	1	0			
6:15	1	2	1	0			
6:30	4	2	4	2			
6:45	0	2	1	0			
7:00	3	1	2	3			
7:15	3	2	2	5			
7:30	6	6	4	8			
7:45	4	2	6	4			
8:00	6	8	2	6			
8:15	5	6	4	4			
8:30	7	8	10	15			
8:45	12	7	7	11			
9:00	3	4	7	6			
9:15	3	7	7	5			
9:30	2	2	2	3			
9:45	2	3	1	4			
10:00	4	9	7	4			
10:15	3	4	2	5			
10:30	6	5	5	4			
10:45	8	4	10	2			
11:00	2	4	5	3			
11:15	2	3	6	4			
11:30	6	10	5	11			
11:45	4	5	2	6			
12:00	5	5	5	3			
12:15	6	1	1	7			
12:30	5	6	5	8			
12:45	0	5	7	1			
13:00	7	10	8	6			
13:15	4	3	2	5			
13:30	7	2	8	8			
13:45	7	6	2	4			
14:00	9	2	8	9			
14:15	2	4	3	12			
14:30	9	9	7	12			
14:45	8	6	6	5			
15:00	2	3	5	10			
15:15	5	4	9	6			
15:30	7	4	3	4			
15:45	5	4	8	7			
16:00	5	6	4	6			
16:15	4	6	4	4			
16:30	4	2	4	0			
16:45	5	5	4	5			
17:00	7	4	6	3			
17:15	6	3	7	3			
17:30	2	4	3	5			
17:45	2	8	5	3			
18:00	4	3	5	2			
18:15	3	5	1	2			
18:30	2	2	6	3			
18:45	3	2	4	6			
19:00	3	6	3	4			
19:15	0	1	1	3			
19:30	1	0	2	6			
19:45	1	1	3	0			
20:00	1	0	4	1			
20:15	2	3	1	2			
20:30	4	2	0	0			
20:45	1	0	2	1			
21:00	0	1	0	2			
21:15	4	0	1	1			
21:30	0	2	1	0			
21:45	0	1	1	0			
22:00	0	0	1	1			
22:15	0	1	1	3			
22:30	0	2	3	0			
22:45	0	0	0	0			
23:00	2	0	0	2			
23:15	0	0	1	0			
23:30	0	0	0	0			
23:45	0	2	1	0			



Site notes:

Doncaster Dr between Banff PI and Golden PI

Southbound

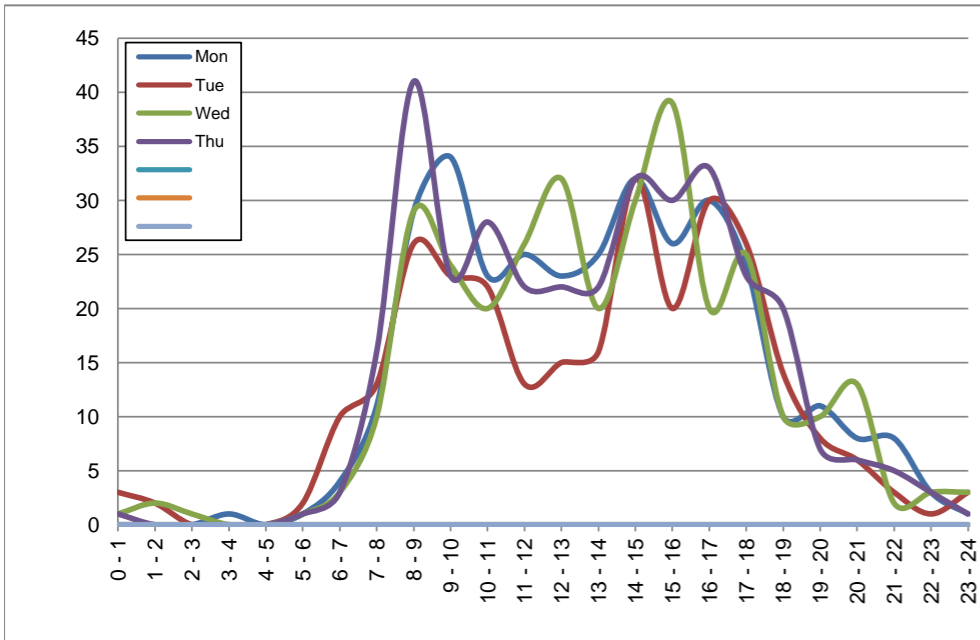
November 23, 2020 to November 26, 2020

Hourly Volumes

Time Period	Mon	Tue	Wed	Thu			
	Nov 23	Nov 24	Nov 25	Nov 26			
0 - 1	0	3	1	1			
1 - 2	0	2	2	0			
2 - 3	0	0	1	0			
3 - 4	1	0	0	0			
4 - 5	0	0	0	0			
5 - 6	1	2	1	1			
6 - 7	4	10	3	3			
7 - 8	11	13	10	16			
8 - 9	29	26	29	41			
9 - 10	34	23	24	23			
10 - 11	23	22	20	28			
11 - 12	25	13	26	22			
12 - 13	23	15	32	22			
13 - 14	25	16	20	22			
14 - 15	32	32	30	32			
15 - 16	26	20	39	30			
16 - 17	30	30	20	33			
17 - 18	24	26	25	23			
18 - 19	10	14	10	20			
19 - 20	11	8	10	7			
20 - 21	8	6	13	6			
21 - 22	8	3	2	5			
22 - 23	3	1	3	3			
23 - 24	1	3	3	1			
Day Total	329	288	324	339			

15-Minute Volumes

Time Start	Mon	Tue	Wed	Thu				Time Start	Mon	Tue	Wed	Thu			
	Nov 23	Nov 24	Nov 25	Nov 26					Nov 23	Nov 24	Nov 25	Nov 26			
0:00	0	3	1	1				12:00	6	2	9	8			
0:15	0	0	0	0				12:15	8	8	11	5			
0:30	0	0	0	0				12:30	2	0	6	4			
0:45	0	0	0	0				12:45	7	5	6	5			
1:00	0	2	0	0				13:00	5	1	4	1			
1:15	0	0	1	0				13:15	7	7	5	6			
1:30	0	0	1	0				13:30	6	5	9	6			
1:45	0	0	0	0				13:45	7	3	2	9			
2:00	0	0	0	0				14:00	7	9	5	6			
2:15	0	0	0	0				14:15	13	15	12	7			
2:30	0	0	1	0				14:30	6	2	5	8			
2:45	0	0	0	0				14:45	6	6	8	11			
3:00	0	0	0	0				15:00	5	5	13	6			
3:15	1	0	0	0				15:15	9	7	12	11			
3:30	0	0	0	0				15:30	6	2	8	6			
3:45	0	0	0	0				15:45	6	6	6	7			
4:00	0	0	0	0				16:00	8	5	4	5			
4:15	0	0	0	0				16:15	8	9	2	7			
4:30	0	0	0	0				16:30	4	11	10	11			
4:45	0	0	0	0				16:45	10	5	4	10			
5:00	0	0	0	0				17:00	8	7	8	9			
5:15	0	0	1	0				17:15	7	7	4	4			
5:30	1	2	0	1				17:30	8	9	7	6			
5:45	0	0	0	0				17:45	1	3	6	4			
6:00	0	0	0	0				18:00	6	4	2	4			
6:15	1	2	1	2				18:15	1	6	5	5			
6:30	0	4	0	0				18:30	1	2	3	5			
6:45	3	4	2	1				18:45	2	2	0	6			
7:00	1	2	3	2				19:00	3	2	0	4			
7:15	0	3	1	5				19:15	2	2	3	1			
7:30	4	4	1	3				19:30	5	4	4	1			
7:45	6	4	5	6				19:45	1	0	3	1			
8:00	3	5	6	4				20:00	3	2	4	2			
8:15	14	8	12	11				20:15	3	1	3	1			
8:30	8	12	8	15				20:30	2	2	5	2			
8:45	4	1	3	11				20:45	0	1	1	1			
9:00	15	8	6	8				21:00	5	1	1	2			
9:15	5	4	5	4				21:15	1	0	0	1			
9:30	9	6	5	6				21:30	2	0	1	2			
9:45	5	5	8	5				21:45	0	2	0	0			
10:00	13	6	5	9				22:00	0	0	1	0			
10:15	4	5	3	5				22:15	1	0	0	2			
10:30	3	4	6	8				22:30	1	1	2	1			
10:45	3	7	6	6				22:45	1	0	0	0			
11:00	8	2	6	5				23:00	0	0	1	0			
11:15	3	3	7	7				23:15	0	0	0	1			
11:30	4	2	9	4				23:30	1	0	1	0			
11:45	10	6	4	6				23:45	0	3	1	0			



Site notes:

Vehicle Speed Summary

Saanich Engineering Department

Count Id: [R0313-03](#)

Filename: [Doncaster Dr between Banff Pl and Golden Pl-Nov-2020.xlsm](#)

Location: Doncaster Dr between Banff Pl and Golden Pl

Note:

Direction: **North-South**

Dates: **November 22, 2020 To November 27, 2020**

Filtered data

AVG. SPEED	20 mph	33 km/h
50 % SPEED	21 mph	34 km/h
85 % SPEED	25 mph	40 km/h
95 % SPEED	27 mph	44 km/h

Location Map



Doncaster Dr between Banff PI and Golden PI

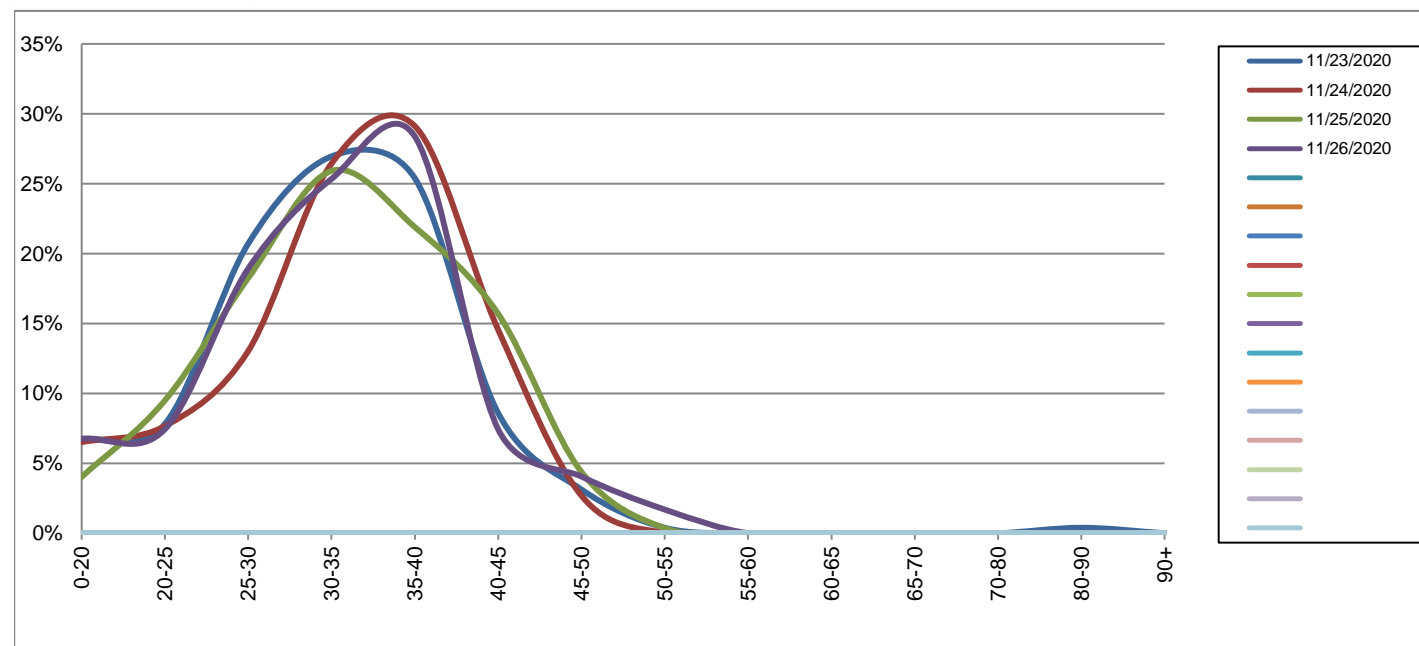
Northbound

November 23, 2020 to November 26, 2020

Daily Speed Bin Percentages															Daily Speed Bin Volumes														Total	Avg. Speed
Bin #	1	2	3	4	5	6	7	8	9	10	11	12	13	14	1	2	3	4	5	6	7	8	9	10	11	12	13	14		
Bin Speeds	0-20	20-25	25-30	30-35	35-40	40-45	45-50	50-55	55-60	60-65	65-70	70-80	80-90	90+	0-20	20-25	25-30	30-35	35-40	40-45	45-50	50-55	55-60	60-65	65-70	70-80	80-90	90+		
11/23/2020	6.6%	7.8%	20.7%	27.0%	25.4%	8.6%	3.1%	0.4%	0.0%	0.0%	0.0%	0.0%	0.4%	0.0%	17	20	53	69	65	22	8	1	0	0	0	0	1	0	256	32
11/24/2020	6.5%	7.7%	13.0%	26.4%	29.1%	14.6%	2.7%	0.0%	0.0%	0.0%	0.0%	0.0%	0.0%	0.0%	17	20	34	69	76	38	7	0	0	0	0	0	0	0	261	33
11/25/2020	4.0%	9.5%	18.2%	25.9%	21.9%	15.7%	4.4%	0.4%	0.0%	0.0%	0.0%	0.0%	0.0%	0.0%	11	26	50	71	60	43	12	1	0	0	0	0	0	0	274	33
11/26/2020	6.8%	7.4%	18.9%	25.3%	28.4%	7.4%	4.1%	1.7%	0.0%	0.0%	0.0%	0.0%	0.0%	0.0%	20	22	56	75	84	22	12	5	0	0	0	0	0	0	296	32
Total	6.0%	8.1%	17.8%	26.1%	26.2%	11.5%	3.6%	0.6%	0.0%	0.0%	0.0%	0.0%	0.1%	0.0%	65	88	193	284	285	125	39	7	0	0	0	0	1	0	1087	33

Speed Data Summary

Bin #	1	2	3	4	5	6	7	8	9	10	11	12	13	14	Total
Bin Speeds	0-20	20-25	25-30	30-35	35-40	40-45	45-50	50-55	55-60	60-65	65-70	70-80	80-90	90+	
Survey Total	65	88	193	284	285	125	39	7	0	0	0	0	1	0	1087
% Total	6.0%	8.1%	17.8%	26.1%	26.2%	11.5%	3.6%	0.6%	0.0%	0.0%	0.0%	0.0%	0.1%	0.0%	100%
Accumulated %	6.0%	14.1%	31.8%	58.0%	84.2%	95.7%	99.3%	99.9%	99.9%	99.9%	99.9%	99.9%	100.0%	100%	
Inverse Accum. %	94.0%	85.9%	68.2%	42.0%	15.8%	4.3%	0.7%	0.1%	0.1%	0.1%	0.1%	0.1%	0.0%	0.0%	
Average Speed	33 KM/H														



Site notes:

Doncaster Dr between Banff PI and Golden PI

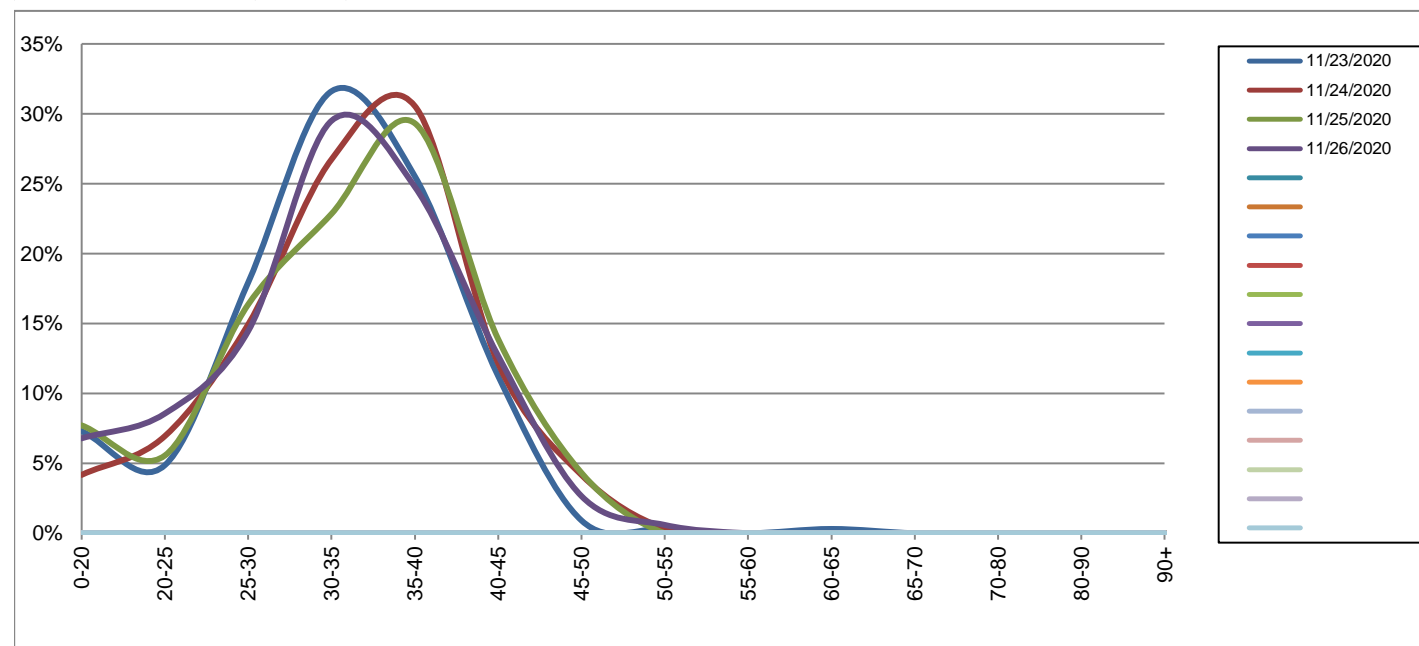
Southbound

November 23, 2020 to November 26, 2020

Daily Speed Bin Percentages															Daily Speed Bin Volumes														Total	Avg.
Bin #	1	2	3	4	5	6	7	8	9	10	11	12	13	14	1	2	3	4	5	6	7	8	9	10	11	12	13	14	Volume	Speed
Bin Speeds	0-20	20-25	25-30	30-35	35-40	40-45	45-50	50-55	55-60	60-65	65-70	70-80	80-90	90+	0-20	20-25	25-30	30-35	35-40	40-45	45-50	50-55	55-60	60-65	65-70	70-80	80-90	90+		
11/23/2020	7.3%	4.9%	17.9%	31.6%	25.5%	11.2%	0.9%	0.3%	0.0%	0.3%	0.0%	0.0%	0.0%	0.0%	24	16	59	104	84	37	3	1	0	1	0	0	0	0	329	32
11/24/2020	4.2%	6.9%	14.9%	26.7%	30.6%	12.2%	4.2%	0.3%	0.0%	0.0%	0.0%	0.0%	0.0%	0.0%	12	20	43	77	88	35	12	1	0	0	0	0	0	0	288	34
11/25/2020	7.7%	5.6%	16.4%	22.8%	29.3%	13.9%	4.3%	0.0%	0.0%	0.0%	0.0%	0.0%	0.0%	0.0%	25	18	53	74	95	45	14	0	0	0	0	0	0	0	324	33
11/26/2020	6.8%	8.6%	14.5%	29.5%	24.8%	12.7%	2.7%	0.6%	0.0%	0.0%	0.0%	0.0%	0.0%	0.0%	23	29	49	100	84	43	9	2	0	0	0	0	0	0	339	32
Total	6.6%	6.5%	15.9%	27.7%	27.4%	12.5%	3.0%	0.3%	0.0%	0.1%	0.0%	0.0%	0.0%	0.0%	84	83	204	355	351	160	38	4	0	1	0	0	0	0	1280	33

Speed Data Summary

Bin #	1	2	3	4	5	6	7	8	9	10	11	12	13	14	Total
Bin Speeds	0-20	20-25	25-30	30-35	35-40	40-45	45-50	50-55	55-60	60-65	65-70	70-80	80-90	90+	
Survey Total	84	83	204	355	351	160	38	4	0	1	0	0	0	0	1280
% Total	6.6%	6.5%	15.9%	27.7%	27.4%	12.5%	3.0%	0.3%	0.0%	0.1%	0.0%	0.0%	0.0%	0.0%	100%
Accumulated %	6.6%	13.0%	29.0%	56.7%	84.1%	96.6%	99.6%	99.9%	99.9%	100.0%	100.0%	100.0%	100.0%	100%	
Inverse Accum. %	93.4%	87.0%	71.0%	43.3%	15.9%	3.4%	0.4%	0.1%	0.1%	0.0%	0.0%	0.0%	0.0%	0.0%	
Average Speed	33 KM/H														



Site notes:

Doncaster Dr between Banff PI and Golden PI

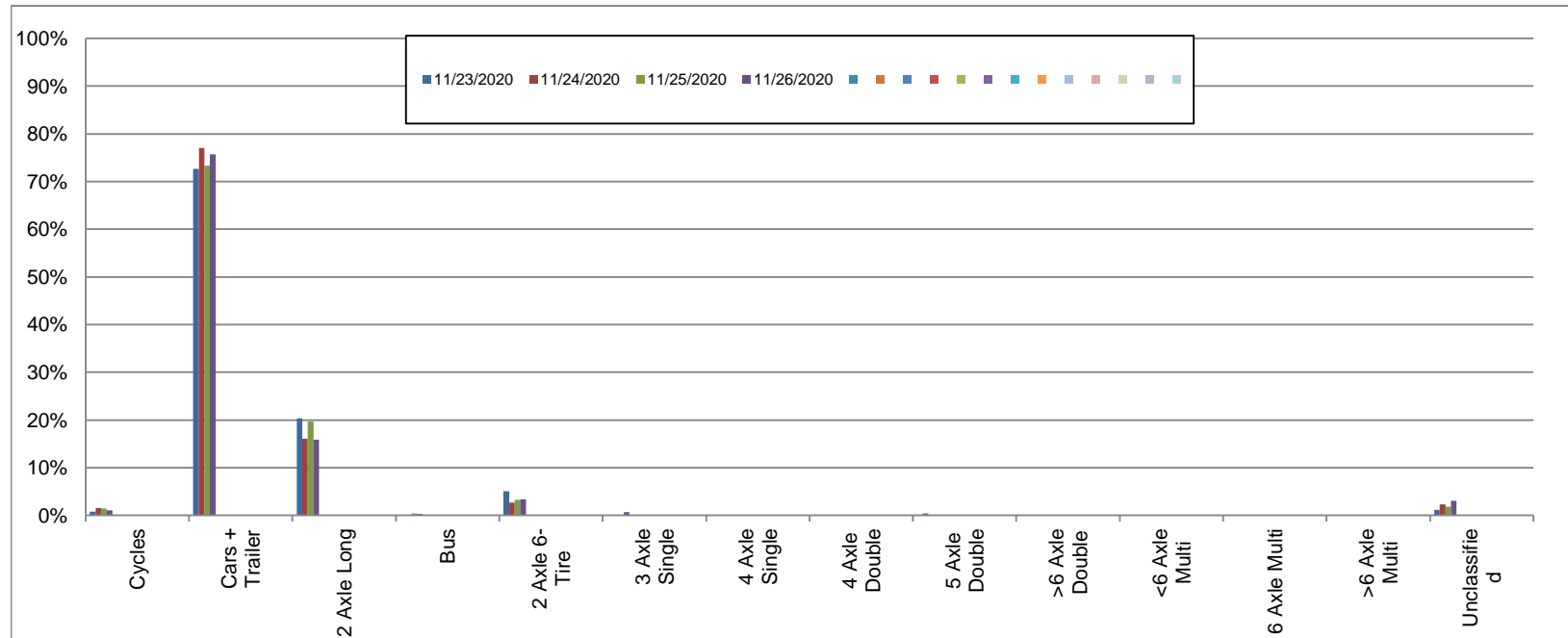
Northbound

November 23, 2020 to November 26, 2020

Daily Class Bin Percentages															Daily Class Bin Volumes											Total Volume				
Bin #	1	2	3	4	5	6	7	8	9	10	11	12	13	14	1	2	3	4	5	6	7	8	9	10	11		12	13	14	
Bin Class	Cycles	Cars + Trailer	2 Axle Long	Bus	2 Axle 6-Tire	3 Axle Single	4 Axle Single	4 Axle Double	5 Axle Double	>6 Axle Double	<6 Axle Multi	6 Axle Multi	>6 Axle Multi	Unclassified	Cycles	Cars + Trailer	2 Axle Long	Bus	2 Axle 6-Tire	3 Axle Single	4 Axle Single	4 Axle Double	5 Axle Double	>6 Axle Double	<6 Axle Multi	6 Axle Multi	>6 Axle Multi	Unclassified		
11/23/2020	0.8%	72.7%	20.3%	0.0%	5.1%	0.0%	0.0%	0.0%	0.0%	0.0%	0.0%	0.0%	0.0%	1.2%	2	186	52	0	13	0	0	0	0	0	0	0	0	0	3	256
11/24/2020	1.5%	77.0%	16.1%	0.0%	2.7%	0.0%	0.0%	0.0%	0.4%	0.0%	0.0%	0.0%	0.0%	2.3%	4	201	42	0	7	0	0	0	0	1	0	0	0	0	6	261
11/25/2020	1.5%	73.4%	19.7%	0.4%	3.3%	0.0%	0.0%	0.0%	0.0%	0.0%	0.0%	0.0%	0.0%	1.8%	4	201	54	1	9	0	0	0	0	0	0	0	0	0	5	274
11/26/2020	1.0%	75.7%	15.9%	0.3%	3.4%	0.7%	0.0%	0.0%	0.0%	0.0%	0.0%	0.0%	0.0%	3.0%	3	224	47	1	10	2	0	0	0	0	0	0	0	0	9	296
Total	1.2%	74.7%	17.9%	0.2%	3.6%	0.2%	0.0%	0.0%	0.1%	0.0%	0.0%	0.0%	0.0%	2.1%	13	812	195	2	39	2	0	0	1	0	0	0	0	23	1087	

Class Data Summary

Bin #	1	2	3	4	5	6	7	8	9	10	11	12	13	14	Total Volume
Bin Class	Cycles	Cars + Trailer	2 Axle Long	Bus	2 Axle 6-Tire	3 Axle Single	4 Axle Single	4 Axle Double	5 Axle Double	>6 Axle Double	<6 Axle Multi	6 Axle Multi	>6 Axle Multi	Unclassified	Total Volume
Survey Total	13	812	195	2	39	2	0	0	1	0	0	0	0	23	1087
% Total	1.2%	74.7%	17.9%	0.2%	3.6%	0.2%	0.0%	0.0%	0.1%	0.0%	0.0%	0.0%	0.0%	2.1%	100%
Accumulated %	1.2%	75.9%	93.8%	94.0%	97.6%	97.8%	97.8%	97.8%	97.9%	97.9%	97.9%	97.9%	97.9%	100.0%	
Inv. Accum. %	98.8%	24.1%	6.2%	6.0%	2.4%	2.2%	2.2%	2.2%	2.1%	2.1%	2.1%	2.1%	2.1%	0.0%	



Classification Descriptions

Bin #	Bin Description
1	Motorcycles
2	Passenger cars, including those with recreational trailers
3	2-axle pick-ups, vans, and RVs, including those with recreational trailers
4	Buses
5	2-axle, 6-tire single units
6	3-axle single units
7	4-axle single units
8	3-axle or 4-axle double unit
9	5-axle double unit
10	6-, 7-, or 8-axle double unit
11	5-axle multiple unit
12	6-axle multiple unit
13	7-or-more-axle multiple unit
14	Vehicles that could not be classified

Site notes:

Doncaster Dr between Banff PI and Golden PI

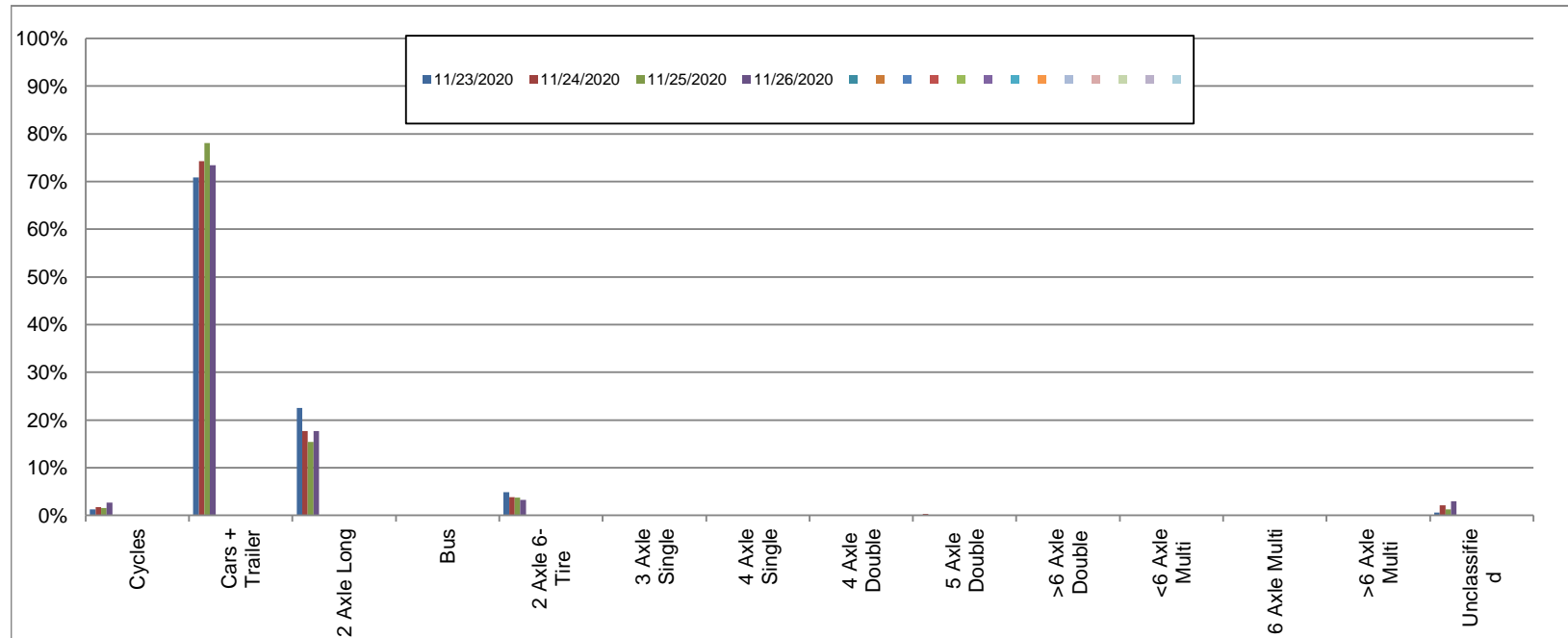
Southbound

November 23, 2020 to November 26, 2020

Daily Class Bin Percentages															Daily Class Bin Volumes											Total Volume				
Bin #	1	2	3	4	5	6	7	8	9	10	11	12	13	14	1	2	3	4	5	6	7	8	9	10	11		12	13	14	
Bin Class	Cycles	Cars + Trailer	2 Axle Long	Bus	2 Axle 6-Tire	3 Axle Single	4 Axle Single	4 Axle Double	5 Axle Double	>6 Axle Double	<6 Axle Multi	6 Axle Multi	>6 Axle Multi	Unclassified	Cycles	Cars + Trailer	2 Axle Long	Bus	2 Axle 6-Tire	3 Axle Single	4 Axle Single	4 Axle Double	5 Axle Double	>6 Axle Double	<6 Axle Multi	6 Axle Multi	>6 Axle Multi	Unclassified		
11/23/2020	1.2%	70.8%	22.5%	0.0%	4.9%	0.0%	0.0%	0.0%	0.0%	0.0%	0.0%	0.0%	0.0%	0.6%	4	233	74	0	16	0	0	0	0	0	0	0	0	0	2	329
11/24/2020	1.7%	74.3%	17.7%	0.0%	3.8%	0.0%	0.0%	0.0%	0.3%	0.0%	0.0%	0.0%	0.0%	2.1%	5	214	51	0	11	0	0	0	0	1	0	0	0	0	6	288
11/25/2020	1.5%	78.1%	15.4%	0.0%	3.7%	0.0%	0.0%	0.0%	0.0%	0.0%	0.0%	0.0%	0.0%	1.2%	5	253	50	0	12	0	0	0	0	0	0	0	0	4	324	
11/26/2020	2.7%	73.5%	17.7%	0.0%	3.2%	0.0%	0.0%	0.0%	0.0%	0.0%	0.0%	0.0%	0.0%	2.9%	9	249	60	0	11	0	0	0	0	0	0	0	0	10	339	
Total	1.8%	74.1%	18.4%	0.0%	3.9%	0.0%	0.0%	0.0%	0.1%	0.0%	0.0%	0.0%	0.0%	1.7%	23	949	235	0	50	0	0	0	0	1	0	0	0	22	1280	

Class Data Summary

Bin #	1	2	3	4	5	6	7	8	9	10	11	12	13	14	Total Volume
Bin Class	Cycles	Cars + Trailer	2 Axle Long	Bus	2 Axle 6-Tire	3 Axle Single	4 Axle Single	4 Axle Double	5 Axle Double	>6 Axle Double	<6 Axle Multi	6 Axle Multi	>6 Axle Multi	Unclassified	Total Volume
Survey Total	23	949	235	0	50	0	0	0	1	0	0	0	0	22	1280
% Total	1.8%	74.1%	18.4%	0.0%	3.9%	0.0%	0.0%	0.0%	0.1%	0.0%	0.0%	0.0%	0.0%	1.7%	100%
Accumulated %	1.8%	75.9%	94.3%	94.3%	98.2%	98.2%	98.2%	98.2%	98.3%	98.3%	98.3%	98.3%	98.3%	100.0%	
Inv. Accum. %	98.2%	24.1%	5.7%	5.7%	1.8%	1.8%	1.8%	1.8%	1.7%	1.7%	1.7%	1.7%	1.7%	0.0%	



Classification Descriptions

Bin #	Bin Description
1	Motorcycles
2	Passenger cars, including those with recreational trailers
3	2-axle pick-ups, vans, and RVs, including those with recreational trailers
4	Buses
5	2-axle, 6-tire single units
6	3-axle single units
7	4-axle single units
8	3-axle or 4-axle double unit
9	5-axle double unit
10	6-, 7-, or 8-axle double unit
11	5-axle multiple unit
12	6-axle multiple unit
13	7-or-more-axle multiple unit
14	Vehicles that could not be classified

Site notes: